

AI & ML BASED PET FEEDING SYSTEM USING IMAGE PROCESSING

Dr.G.Anil Kumar^{*a}, Dr.A.Balaram^b, SMD Shafiulla^c, K.Anoosha^d

P.Naveen Kumar^e

^{a,b}Professor, Department of CSE, Scient Institute of Technology, India

^{c,d,e}Assistant Professor, Department of CSE, Scient Institute of Technology, India

ABSTRACT: With the increasing adoption of smart home technologies, automation in daily tasks has become essential for improving convenience and efficiency. Pet care, particularly feeding, is a critical responsibility that often requires consistent timing and monitoring. However, busy schedules and lack of real-time awareness can lead to irregular feeding patterns, affecting the health of pets. This project proposes an AI and Machine Learning-based Pet Feeding System using Image Processing to automate and optimize the feeding process.

The proposed system utilizes a camera module to monitor the presence and behavior of pets in real time. Image processing techniques are applied to detect and recognize the pet, ensuring that food is dispensed only when the pet is present. Machine learning algorithms are used to analyze feeding patterns and adjust food quantity based on factors such as pet activity, frequency of visits, and previous feeding data. This intelligent system prevents overfeeding and ensures that pets receive the appropriate amount of food at the right time.

The system integrates hardware components such as a microcontroller, sensors, and an automated feeding mechanism to dispense food accurately. It can also be connected to a mobile or web application, allowing pet owners to monitor feeding activity remotely and receive notifications. Additionally, the system can maintain feeding logs and provide insights into the pet's behavior and health.

Overall, the proposed solution offers a smart and efficient approach to pet care by combining artificial intelligence, machine learning, and image processing. It enhances convenience for pet owners while ensuring proper nutrition and well-being for pets. The system can be widely applied in smart homes and pet care environments, contributing to the advancement of intelligent automation systems.

Keywords: *Artificial Intelligence, Machine Learning, Image Processing, Smart Pet Feeder, Automation, Computer Vision, IoT, Pet Monitoring, Embedded Systems, Smart Home Systems*

I. INTRODUCTION

The advancement of artificial intelligence and smart automation technologies has significantly transformed everyday life, enabling efficient management of routine tasks. One such area that has benefited from these developments is pet care. Feeding pets at the right time and in appropriate quantities is essential for maintaining their health and well-being. However, due to busy lifestyles and irregular schedules, pet owners often face difficulties in maintaining consistent feeding routines. This creates a need for intelligent systems that can automate pet feeding while ensuring proper monitoring and control.

Traditional pet feeding systems are either manual or timer-based, where food is dispensed at fixed intervals regardless of the pet's actual presence or behavior. These systems lack adaptability and can lead to issues such as overfeeding, underfeeding, or food wastage. Additionally, they do not provide any mechanism for monitoring the pet's feeding habits or health. As a result, there is a growing demand for smart feeding systems that can make decisions based on real-time conditions and pet activity.

The integration of Artificial Intelligence (AI) and Machine Learning (ML) with image processing techniques offers a promising solution to these challenges. Image processing allows the system to detect and recognize the presence of a pet using camera input. Machine learning models can analyze patterns in the pet's behavior, such as feeding frequency and activity levels, to make intelligent decisions about food dispensing. This ensures that food is provided only when needed and in appropriate quantities, improving the overall efficiency of the system.

In addition to automation, the use of Internet of Things (IoT) technology enables remote monitoring and control of the pet feeding system. Pet owners can access real-time information about feeding activities through mobile or web applications. Notifications and alerts can be generated to inform users about feeding events or any irregularities. This enhances convenience and provides peace of mind, especially for individuals who are frequently away from home.

This project focuses on designing and developing an AI and ML-based pet feeding system using image processing techniques. The objective is to create a smart and adaptive system that ensures timely and appropriate feeding while monitoring the pet's behavior. By combining computer vision, machine learning, and embedded systems, the proposed solution aims to improve pet care and contribute to the development of intelligent home automation systems.

II. SURVEY OF RESEARCH

Early research in automated pet feeding systems primarily focused on simple timer-based mechanisms. These systems dispensed food at fixed intervals without considering the actual presence or behavior of the pet. While they provided basic automation, they lacked intelligence and adaptability. Researchers identified that such systems often resulted in issues like overfeeding, food wastage, and inability to monitor pet activity, highlighting the need for more advanced and responsive solutions.

With the advancement of embedded systems and sensor technologies, researchers began developing semi-automated feeding systems using sensors such as weight sensors, motion detectors, and infrared sensors. These systems improved functionality by detecting pet presence or measuring food levels. However, they were limited in accuracy and often failed to distinguish between different pets or detect specific behaviors. The reliance on basic sensors also restricted their ability to analyze complex patterns in pet activity.

The introduction of image processing techniques marked a significant improvement in smart pet feeding systems. Cameras were used to capture real-time images, and computer vision algorithms were applied to detect and recognize pets. Techniques such as object detection and pattern recognition enabled more accurate identification of pets compared to traditional sensors. However, early image processing systems required manual feature extraction and were less effective in handling variations in lighting, angles, and backgrounds.

Recent research has focused on integrating machine learning and deep learning models with image processing for enhanced performance. Convolutional Neural Networks (CNNs) are widely used for image classification and object detection, allowing systems to accurately

identify pets and analyze their behavior. These models can learn from large datasets and improve detection accuracy over time. Additionally, machine learning algorithms are used to analyze feeding patterns and optimize food dispensing based on pet behavior.

Furthermore, modern systems incorporate IoT technology for remote monitoring and control. Cloud-based platforms allow data storage and analysis, enabling pet owners to access feeding information through mobile applications. Researchers are also exploring features such as facial recognition for pets, health monitoring, and predictive analytics. Despite these advancements, challenges such as system cost, energy consumption, and real-time processing remain areas of ongoing research. Overall, the evolution of pet feeding systems demonstrates a shift from basic automation to intelligent, adaptive, and connected solutions driven by AI and machine learning.

III. WORKING METHODOLOGY

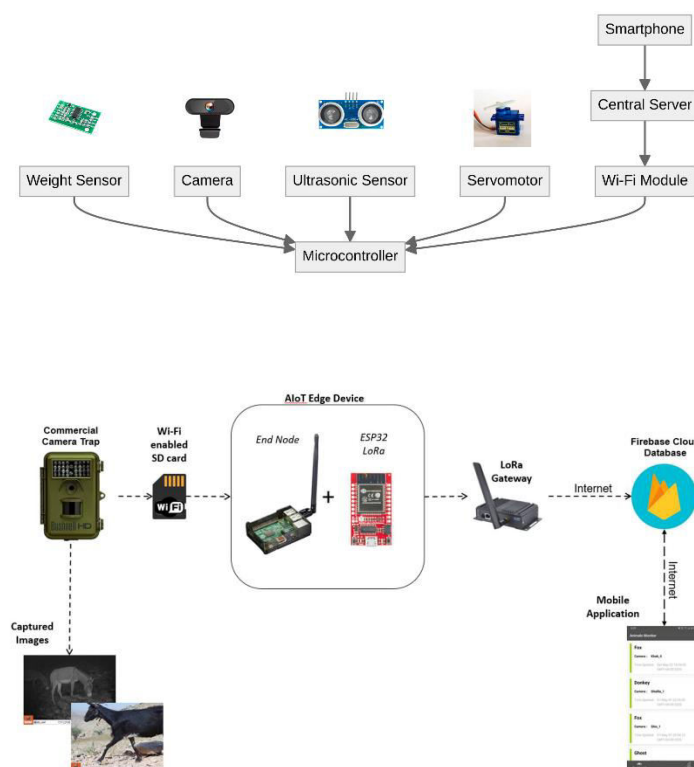


Fig.1. AI & ML Based Pet Feeding System Architecture

The working methodology of the AI & ML Based Pet Feeding System using Image Processing is designed to automate feeding based on real-time detection and intelligent decision-making. The process begins with a camera module installed near the feeding area, which continuously captures images or video of the surroundings. This input is used to detect the presence of the pet and analyze its behavior.

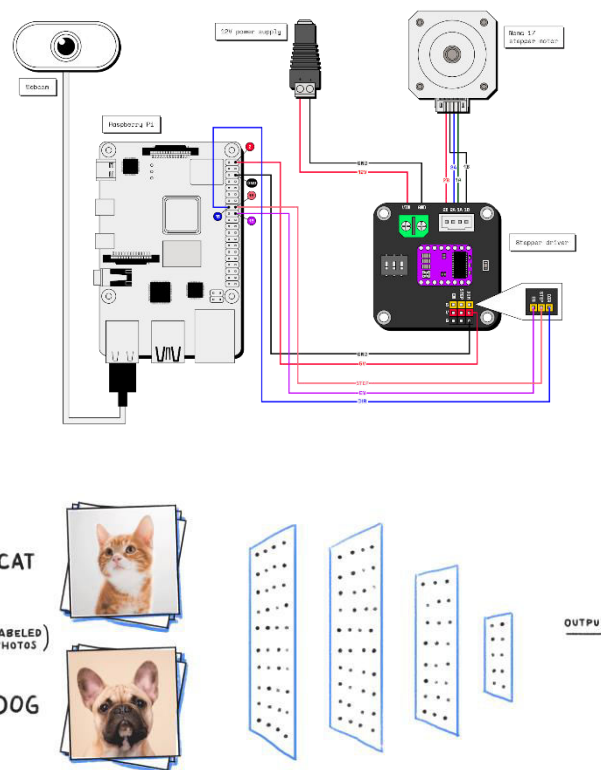
In the preprocessing stage, the captured images are processed to improve quality and remove noise. Techniques such as image resizing, normalization, and filtering are applied to ensure that the input is suitable for further analysis. The processed images are then passed to an image processing module where features such as shape, color, and patterns are extracted.

The system uses machine learning or deep learning models, such as Convolutional Neural Networks (CNNs), to identify and recognize the pet from the captured images. The model is trained using a dataset of pet images, enabling it to accurately distinguish the pet from other objects. Once the pet is detected, the system verifies its presence and determines whether feeding is required based on predefined conditions or learned behavior patterns.

After detection, the decision-making module analyzes feeding parameters such as time intervals, previous feeding history, and pet activity. Based on this analysis, the system decides the quantity of food to be dispensed. The microcontroller then activates the feeding mechanism, which typically consists of a motor-driven dispenser that releases a controlled amount of food into the bowl.

The system also includes IoT connectivity, allowing data to be transmitted to a cloud platform or mobile application. Pet owners can monitor feeding activities, receive notifications, and control the system remotely. The entire process operates continuously, ensuring timely feeding and efficient pet care. This methodology combines image processing, machine learning, and automation to provide a smart and reliable feeding solution.

IV. IMPLEMENTATION



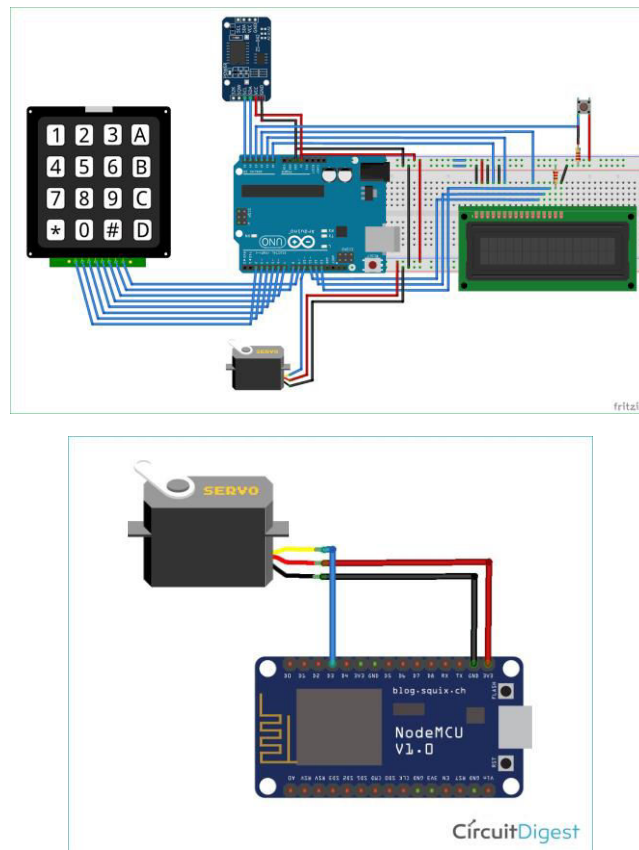


Fig.2. Implementation of AI & ML Based Pet Feeding System

The implementation of the AI & ML Based Pet Feeding System involves the integration of hardware components, image processing algorithms, and machine learning models. The system is developed using platforms such as Raspberry Pi or Arduino for hardware control, along with Python for implementing image processing and machine learning functionalities. Libraries such as OpenCV are used for image processing, while TensorFlow or PyTorch are used for training and deploying deep learning models.

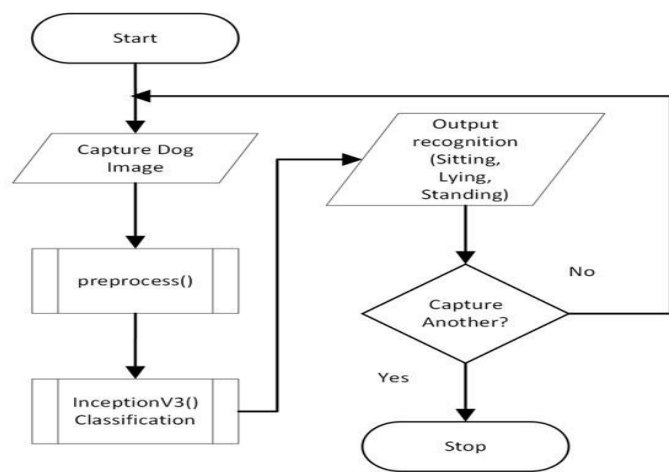
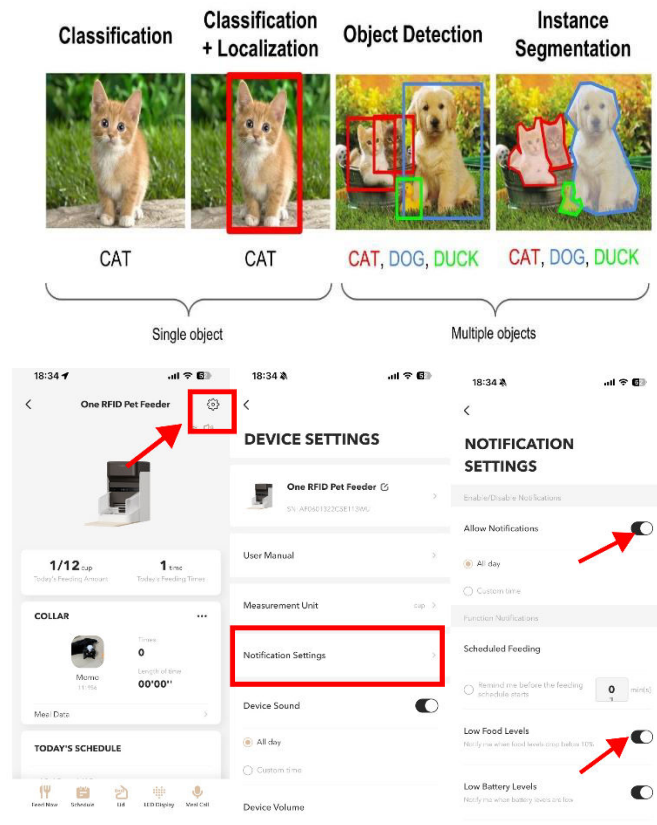
In the hardware setup, a camera module is connected to the microcontroller or single-board computer to capture real-time images of the feeding area. A motor-driven food dispenser is used to release food when required. The motor is controlled using a motor driver module, which receives signals from the microcontroller. Additional components such as sensors and power supply units ensure smooth operation of the system.

The software implementation begins with capturing images using the camera module. These images are processed using OpenCV to enhance quality and extract relevant features. The processed images are then passed to a trained machine learning model, such as a Convolutional Neural Network (CNN), which identifies the presence of the pet. The model is trained using a dataset of pet images to improve accuracy and reliability.

Once the pet is detected, the system checks predefined conditions such as feeding schedule and previous feeding data. Based on this analysis, the system decides whether to dispense food. The microcontroller then activates the motor to release a controlled amount of food into the feeding bowl. The system ensures that food is dispensed only when necessary, preventing overfeeding.

The system also includes IoT integration, allowing data to be stored and accessed through cloud platforms. A mobile or web application is used to monitor feeding activity, receive notifications, and control the system remotely. The implementation demonstrates a complete and practical solution for automated pet feeding using AI, machine learning, and image processing technologies.

V. RESULTS EXPLANATION



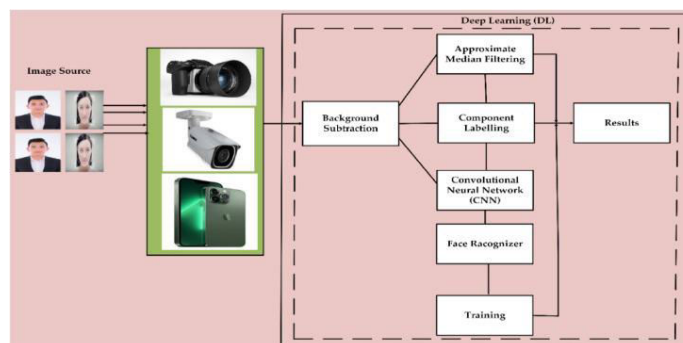


Fig.3. Output of Pet Detection and Feeding System

The results of the AI & ML Based Pet Feeding System demonstrate its effectiveness in automating the feeding process using intelligent detection and decision-making. The system successfully detects the presence of the pet using image processing and machine learning techniques. The trained model accurately identifies the pet in real-time images, ensuring that food is dispensed only when the pet is present.

The system shows high accuracy in detecting pets under different conditions, including variations in lighting and background. The use of Convolutional Neural Networks (CNNs) enables the system to recognize patterns and features effectively, resulting in reliable performance. The detection results are displayed through the interface, confirming whether the pet is identified correctly.

Once the pet is detected, the system analyzes feeding conditions and dispenses the appropriate amount of food. The motor-driven mechanism operates smoothly, releasing food in controlled quantities. The system prevents overfeeding by considering previous feeding data and predefined schedules. This ensures that the pet receives a balanced diet.

The integration of IoT features enhances the system by providing real-time monitoring and notifications. Users can view feeding activities and receive alerts through mobile applications. The system maintains logs of feeding events, allowing users to track their pet's behavior and feeding patterns.

Overall, the results confirm that the proposed system is efficient, accurate, and reliable. It provides a smart solution for automated pet feeding, improving convenience for pet owners while ensuring proper care and nutrition for pets.

VI. CONCLUSION

The AI & ML Based Pet Feeding System using Image Processing provides an intelligent and automated solution for modern pet care. Traditional feeding methods often lack flexibility and require constant human involvement, which can be challenging for pet owners with busy schedules. The proposed system overcomes these limitations by using image processing and machine learning techniques to ensure that pets are fed at the right time and in appropriate quantities.

The integration of computer vision allows the system to detect the presence of pets accurately, while machine learning models analyze feeding patterns and make informed decisions. This combination ensures efficient and adaptive feeding, reducing the risks of overfeeding or

underfeeding. The use of automated dispensing mechanisms further enhances the system's functionality by providing precise control over food distribution.

The implementation demonstrates that the system can operate effectively in real-time conditions, handling variations in environment and pet behavior. The addition of IoT connectivity enables remote monitoring and control, offering convenience and flexibility to pet owners. Notifications and data logging features provide valuable insights into feeding habits, contributing to better pet health management.

The system is scalable and can be further enhanced with advanced features such as facial recognition for pets, health monitoring sensors, and predictive analytics. Future improvements may also focus on optimizing energy consumption and improving model accuracy using larger datasets and advanced deep learning techniques.

In conclusion, the proposed system represents a smart, reliable, and efficient approach to pet feeding. It leverages the power of artificial intelligence and automation to improve pet care, making it a valuable contribution to smart home technologies and intelligent systems.

REFERENCES

- [1] I. Goodfellow, Y. Bengio, and A. Courville, *Deep Learning*. MIT Press, 2016.
- [2] R. Szeliski, *Computer Vision: Algorithms and Applications*. Springer, 2010.
- [3] D. Forsyth and J. Ponce, *Computer Vision: A Modern Approach*. Pearson, 2012.
- [4] A. Krizhevsky et al., "ImageNet classification with deep convolutional neural networks," *NeurIPS*, 2012.
- [5] Y. LeCun et al., "Gradient-based learning applied to document recognition," *Proceedings of the IEEE*, 1998.
- [6] G. Bradski, "The OpenCV library," *Dr. Dobb's Journal*, 2000.
- [7] A. Vaswani et al., "Attention is all you need," *NeurIPS*, 2017.
- [8] K. Ashton, "That 'Internet of Things' thing," *RFID Journal*, 2009.
- [9] L. Atzori et al., "The Internet of Things: A survey," *Computer Networks*, 2010.
- [10] H. Hassoune et al., "IoT-based smart systems," *Procedia Computer Science*, 2016.
- [11] S. Srikanth et al., "Smart automation systems using IoT," *International Journal*, 2015.
- [12] M. Abadi et al., "TensorFlow: Large-scale machine learning system," *OSDI*, 2016.
- [13] F. Pedregosa et al., "Scikit-learn: Machine learning in Python," *JMLR*, 2011.
- [14] J. Redmon et al., "You Only Look Once: Unified object detection," *CVPR*, 2016.
- [15] K. He et al., "Deep residual learning for image recognition," *CVPR*, 2016.
- [16] A. Howard et al., "MobileNets: Efficient convolutional neural networks," *arXiv*, 2017.
- [17] J. Deng et al., "ImageNet: A large-scale hierarchical image database," *CVPR*, 2009.
- [18] D. Kingma and J. Ba, "Adam: A method for stochastic optimization," *ICLR*, 2015.

- [19] S. Ren et al., "Faster R-CNN: Towards real-time object detection," *NeurIPS*, 2015.
- [20] R. Girshick, "Fast R-CNN," *ICCV*, 2015.
- [21] M. Everingham et al., "The Pascal Visual Object Classes challenge," *IJCV*, 2010.
- [22] T. Cover and P. Hart, "Nearest neighbor pattern classification," *IEEE Transactions*, 1967.
- [23] V. Vapnik, *Statistical Learning Theory*. Wiley, 1998.
- [24] C. Bishop, *Pattern Recognition and Machine Learning*. Springer, 2006.
- [25] S. Russell and P. Norvig, *Artificial Intelligence: A Modern Approach*. Pearson, 2010.
- [26] J. Brownlee, *Machine Learning Mastery*. 2017.
- [27] M. Swan, *Blockchain: Blueprint for a New Economy*. O'Reilly, 2015.
- [28] P. Wayner, *Disappearing Cryptography*. Morgan Kaufmann, 2002.
- [29] A. Jain et al., "Biometric recognition systems," *IEEE Transactions*, 2004.
- [30] D. Jurafsky and J. Martin, *Speech and Language Processing*. Pearson, 2020.