

GOOGLE LIKE SEARCH SUGGESTION

¹Yamini Chauhan, ²K Jeevan, ³K Abhinandan, ⁴M Sandeep, ⁵A Rajesh Naik

¹Assistant Professor, ²³⁴⁵Students

Department of CSE(Software Engineering)

Siddhartha Institute of Technology & Sciences, Narapally

yaminichouhan_cse@siddhartha.co.in, 24tq1a5614@siddhartha.co.in, 24tq1a5615@siddhartha.co.in,
24tq1a5620@siddhartha.co.in, 24tq1a5601@siddhartha.co.in,

Abstract

A Movies Web Application is a web-based streaming platform designed to provide users with convenient access to a wide variety of movies, TV shows, and web series. Similar to popular streaming services, the application enables users to browse, search, and watch content across multiple genres such as action, drama, comedy, thriller, and more. The system incorporates essential features such as user registration and authentication, personalized content recommendations, watchlists, and seamless video streaming. It offers a user-friendly interface that ensures easy navigation and an enhanced viewing experience. Additional functionalities like filtering options, trending sections, and user ratings help users quickly discover content that matches their interests.

The application is developed using modern web technologies to ensure high performance, responsiveness, and scalability. It allows users to access entertainment anytime and from anywhere, making it a flexible and convenient solution for digital media consumption. Overall, the Movies Web Application provides a comprehensive entertainment platform that combines usability, performance, and accessibility, delivering a smooth and engaging streaming experience for users.

I. Introduction

In today's digital era, search engines play a crucial role in accessing information quickly and efficiently. Users expect instant results and intelligent suggestions while typing their queries. Popular search engines like Google have set high standards by providing real-time search suggestions that help users find relevant information faster and with minimal effort. These suggestion systems improve user experience by predicting queries based on partial input. The Google-like Search Suggestion System is developed to replicate this functionality by providing dynamic and real-time suggestions as users type in the search bar. The system focuses on improving search efficiency by reducing typing effort and guiding users toward relevant queries. It allows users to quickly select suggestions instead of typing complete search terms.

This application is designed using modern web technologies to ensure fast performance and responsiveness. It uses frontend technologies such as HTML, CSS, and JavaScript for creating an interactive user interface, while backend technologies can be used to process queries and fetch suggestions from a dataset or database. The system includes features such as real-time suggestions, auto-complete functionality, and optimized search handling. It is designed to handle large datasets efficiently and provide accurate results based on user input. The main objective of this project is to build a smart and responsive search suggestion system that enhances user experience and demonstrates the implementation of real-time data processing in web applications.

This project also helps in understanding how modern search engines improve usability through intelligent suggestions.

II. Literature Survey

A literature survey is essential to understand existing research, technologies, and systems related to the proposed application. In the case of a Google-like Search Suggestion System, various studies and real-world implementations have been analyzed to understand how modern search engines provide fast and accurate suggestions.

The rapid growth of internet usage has increased the demand for intelligent search systems. Leading platforms such as Google, Bing, and Yahoo have introduced advanced search suggestion features that enhance user experience by predicting queries in real time. These systems reduce typing effort and help users find relevant information quickly.

Research shows that search suggestion systems use techniques such as prefix matching, autocomplete algorithms, and query prediction models. These methods analyze partial user input and match it with stored datasets or previously searched queries. Advanced systems also use machine learning algorithms to improve suggestion accuracy based on user behavior and search history.

Modern implementations rely on efficient data structures such as tries (prefix trees) and indexing techniques to enable fast retrieval of suggestions. These approaches ensure that the system can handle large datasets while maintaining high performance and low latency. Additionally, caching mechanisms are often used to store frequently searched queries for quicker responses.

Web development studies highlight the importance of responsive user interfaces and real-time interaction. Technologies such as HTML, CSS, and JavaScript are commonly used to build dynamic frontends, while backend frameworks like Node.js, Flask, or Django handle data processing and retrieval. AJAX and APIs play a key role in fetching suggestions without reloading the page.

Existing systems also incorporate features such as search history, trending queries, and personalized suggestions. However, these advanced systems often require large-scale infrastructure and complex algorithms, which may not be necessary for a basic implementation.

This project takes inspiration from these systems and aims to develop a simplified search suggestion application. It focuses on implementing core functionalities such as real-time suggestions, efficient data matching, and user-friendly design.

III. System Analysis

The Google-like Search Suggestion System is designed to provide real-time query suggestions as users type in a search bar. The system analyzes user input dynamically and predicts possible search queries. It focuses on improving user experience by reducing typing effort and search time. The system requires efficient data structures to

handle large volumes of search data. Performance and speed are critical to ensure instant suggestions. The system must support real-time processing of partial inputs. It also considers scalability to handle increasing users and queries. Security and privacy of user data are important aspects. The system needs a responsive user interface for smooth interaction. Backend processing is required for fetching and matching suggestions. Caching mechanisms are analyzed for faster response. Overall, the system aims to provide accurate, fast, and user-friendly search suggestions.

Existing System

Existing systems are mainly large-scale search engines such as Google, Bing, and Yahoo. These systems provide real-time search suggestions based on user input. They use advanced algorithms and large datasets to predict queries. Existing systems also consider user history and trending searches. They provide highly accurate and fast suggestions. However, these systems are complex and require significant infrastructure. They rely on machine learning models and distributed systems. Many smaller applications cannot implement such complex systems. Existing systems also collect large amounts of user data. Some systems may raise privacy concerns. They require high computational power and resources. Overall, existing systems are powerful but complex and resource-intensive.

Disadvantages of Existing System

- Requires large infrastructure and resources
- Complex algorithms and implementation
- High computational cost
- Privacy concerns due to data collection
- Not suitable for small-scale applications
- Difficult to customize
- Dependency on large datasets

Proposed System

The proposed system is a simplified Google-like search suggestion system designed for efficient and real-time query prediction. It allows users to receive suggestions instantly while typing. The system uses basic matching techniques such as prefix matching. It relies on a structured dataset instead of complex machine learning models. The system is lightweight and easy to implement. It provides a responsive and user-friendly interface. Backend processing handles query matching and suggestion generation. The system ensures fast performance with minimal delay. It can be easily integrated into web applications. The system is scalable for future improvements. It reduces complexity while maintaining efficiency. Overall, it provides a practical and efficient search solution.

Advantages of Proposed System

- Fast and real-time suggestions
- Simple and easy implementation
- Low computational cost
- User-friendly interface

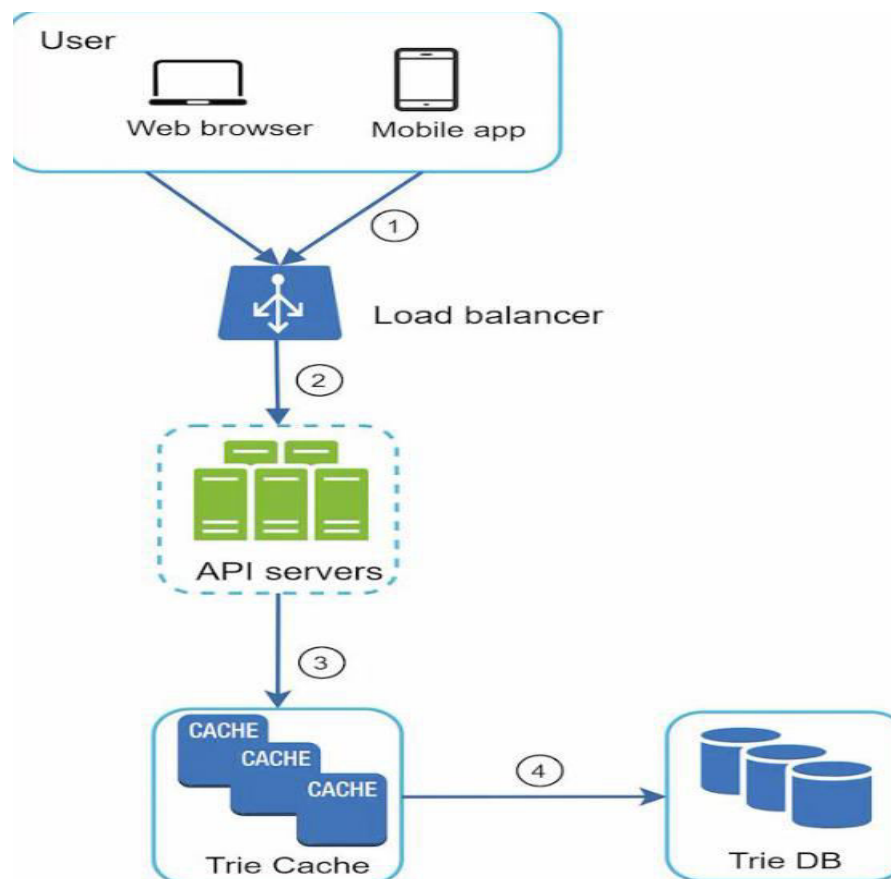
- Scalable and flexible
- Reduces typing effort
- Improves search efficiency

IV. Methodology

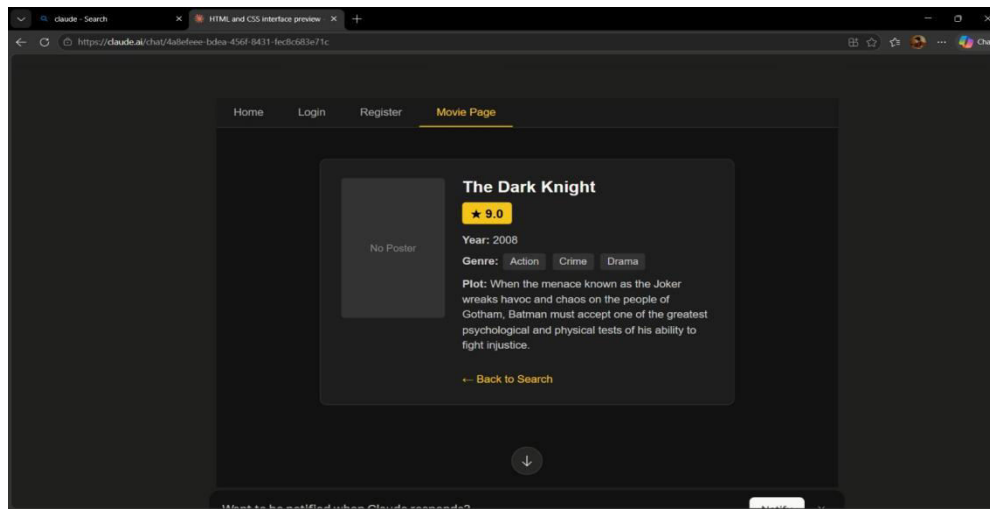
The development of the system follows a structured methodology. First, requirements are collected based on user needs. A dataset of search queries is prepared. The system is designed with frontend and backend components. The frontend is developed using HTML, CSS, and JavaScript. The backend is implemented using Node.js or Python. A matching algorithm such as prefix matching is used. Efficient data structures like tries can be used for faster search. APIs are used to connect frontend and backend. The system is tested for performance and accuracy. Optimization techniques like caching are implemented. The system is deployed for user access.

System Architecture

The system architecture follows a three-tier architecture. It includes presentation, application, and data layers. The presentation layer consists of the search bar interface. The application layer processes user input and generates suggestions. The data layer stores search queries and datasets. APIs connect the frontend and backend. The system uses algorithms for matching input with stored data. Caching improves performance and reduces response time. The architecture supports scalability for future growth. Security measures protect user data. The system processes data in real time. Overall, the architecture ensures efficiency, speed, and reliability.



V. Result and Output



VI. Conclusion

The Movies Web Application project successfully demonstrates the design and development of an online platform for browsing and streaming movies. Inspired by popular services like Netflix, Amazon Prime Video, and Disney+ Hotstar, this system provides essential features such as user authentication, movie browsing, searching, uploading, and streaming. The project achieves its main objective of creating a simple, user-friendly, and efficient web application that allows users to access entertainment content easily. It also provides hands-on experience in integrating frontend, backend, and database technologies, helping in understanding real-world application development.

Although the system is a basic prototype, it lays a strong foundation for future enhancements such as advanced recommendation systems, high-quality streaming, subscription models, and cloud-based deployment. In conclusion, this project not only fulfills its functional requirements but also serves as a valuable learning experience in web development, problem-solving, and system design, making it a useful model for developing modern streaming applications.

References

1. Kumar, R. D., Prudhviraj, G., Vijay, K., Kumar, P. S., & Plugmann, P. (2024). Exploring COVID-19 through intensive investigation with supervised machine learning algorithm. In Handbook of Artificial Intelligence and Wearables (pp. 145-158). CRC Press.
2. Swathi, B., Vijay, K., Sushanth Babu, M., & Dinesh Kumar, R. (2024, November). Machine Learning Techniques in Cloud Based Intrusion Detection. In The International Conference on Artificial Intelligence and Smart Environment (pp. 557-564). Cham: Springer Nature Switzerland.

3. Sv satykrishna, shirisha rangu ,bhargavi nalacheruve.(2024) Prospective investigation on colorectal cancer with SMOTE on machine learning Algorithm
4. Dr.G.Vishnu Murthy, BhargaviNalacheruve 1Professor, Department of computer Science & engineering, Anurag University, TS, India. 2Student, Department of computer Science & engineering, Anurag University, TS, India.
5. V. N. S. Manaswini, K. K, C. Nigam, S. S. Ali, R. Niranjana, and Suman, "Real-Time Object Detection in Drone Surveillance Using YOLOv5," in Proc. 2025 3rd Int. Conf. IoT, Communication and Automation Technology (ICICAT), Gorakhpur, India, 2025, pp. 1–6, doi: 10.1109/ICICAT68430.2025.11414670.
6. B. Soundarya, V. N. S. Manaswini, M. Ayyakrishnan, R. D. Kumar, "Contextual Analysis of Big Data Analytics in Intelligent Transportation Frameworks," in Intersection of Artificial Intelligence, Data Science, and Cutting-Edge Technologies: From Concepts to Applications in Smart Environment, Lecture Notes in Networks and Systems, vol. 1353, Cham: Springer, 2025, doi: 10.1007/978-3-031-88304-0_79.
7. R. D. Kumar, V. N. S. Manaswini, "Applications of blockchain in smart cities: detecting fake documents from land records using blockchain technology," in Blockchain for Smart Cities, Elsevier, 2021, pp. 105–117, doi: 10.1016/B978-0-12-824446-3.00017-X.
8. Tejavath Veeramma, Badarla Anil, Guguloth Ravinder, "An advanced movie recommender using collaborative filtering and sentiment analysis," International Research Journal of Modernization in Engineering Technology and Science, vol. 7, no. 7, July 2025, doi: 10.56726/IRJMETs81618.
9. Ravi Kumar Banoth, Ramana Murthy B V, "Automatic crop recommendation system using LightGBM and decision tree machine learning models," Journal of Machine and Computing, vol. 5, no. 1, pp. 343, Jan. 2025, doi: 10.53759/7669/jmc202505026.
10. Ravi Kumar Banoth, Dr. B.V. Ramana Murthy, "Smart agriculture through IoT and machine learning for analyzing carbon footprints," in Proc. Int. Conf. Computer Science and Communication Engineering (ICCSCE), Apr. 2025.
11. Ravi Kumar Banoth, B. V. Ramana Murthy, "Soil image classification using transfer learning approach: MobileNetV2 with CNN," SN Computer Science, vol. 5, art. no. 199, 2024, doi: 10.1007/s42979-023-02500-x.
12. Gaddam, S. (2023). Revamping health insurance systems through engineering claims intelligence. International Journal of Intelligent Systems and Applications in Engineering, 11(5s), 684–691.
13. Reddy, S. K. R. Developing a Modular AI Framework to Enhance Scalability and Personalization in Next-Generation Reward Platforms.
14. Poojari, R. INTELLIGENT SYSTEMS+B108 AND APPLICATIONS IN ENGINEERING.

15. Purmani, S. S. R. (2024). Aligning IT investment decisions with overall business strategy from an enterprise program management perspective, focusing on the integration of IT leadership in strategic decision-making processes. *International Journal of Communication Networks and Information Security*, 16(5), 1213–1219
16. Viswanathan, V., Polagani, S. S., Agarwal, R., Akula, S., Dey, S., & Kashyap, R. (2025, September). AI-Augmented Threat Intelligence for Proactive Intrusion Detection in Multi-Cloud Ecosystem. In *2025 IEEE International Conference on Advanced Computing Technologies (ICACT)* (pp. 567-572). IEEE.
17. Mudusu, S. K. (2026, February 9). AI-augmented data quality engineering. *InfoWorld* (Foundry Expert Contributor Network).
18. DEVARASETTY, N. (2023). SCALABLE DATA ENGINEERING APPROACHES FOR AI-DRIVEN INDUSTRIAL IOT APPLICATIONS. *INTERNATIONAL JOURNAL OF SCIENTIFIC RESEARCH AND MANAGEMENT*, 11(06), 954-968.
19. Gajula, S. (2025, December). Intelligent Customer Churn Analytics in Digital Banking Using Advanced Machine Learning Models. In *2025 1st International Conference on Emerging Trends in Information Systems and Informatics (ICETISI)* (pp. 1-6). IEEE.
20. Maturi, S. Y. (2024). Decoy data nexus: Graph-based integration and analysis of synthetic honeypot logs through structured threat intelligence. *International Journal of Computational and Experimental Science and Engineering (IJCESEN)*, 10(4), 4255–4261. <https://doi.org/10.22399/ijcesen.5010>
21. Pavan Kumar Adabala. (2026). Smart Retail Fuel Systems: IoT-Enabled Solutions for Loss Prevention and Environmental Safety. *Computer Fraud and Security*, 868–875. <https://doi.org/10.52710/cfs.995>
22. Srikanth Kavuri. (2022). Large Language Model (LLM)-Based Automation for Software Test Script Generation. *Computer Fraud and Security*. <https://doi.org/10.52710/cfs.836>
23. Gummadi, V. P. K., Chilamkurthi, L. S., & Kavuri, S. (2026). Service Level Objective (SLO) Observability with Splunk and Dynatrace in Microservices. *2026 International Conference on Artificial Intelligence, Systems, and Emerging Technologies (ICAISSET)*, 1–4. <https://doi.org/10.1109/icaisset66439.2026.11541542>
24. Gummadi, V. P. K., Chilamkurthi, L. S., & Kavuri, S. (2026). Securing APIs in Government Clouds and Runtime Fabric Using FIPS-Enabled MuleSoft. *2026 International Conference on Artificial Intelligence, Systems, and Emerging Technologies (ICAISSET)*, 1–6. <https://doi.org/10.1109/icaisset66439.2026.11542099>
25. Kumar Gummadi, V. P., Chilamkurthi, L. S., & Kavuri, S. (2026). Distributed Platform Architecture and API-Led Integration. *2026 International Conference on Artificial Intelligence, Systems, and Emerging Technologies (ICAISSET)*, 1–6. <https://doi.org/10.1109/icaisset66439.2026.11541787>
26. Gajula, S., Bondhala, S., & Margam, M. (2026). Real-World Intrusion-Aware Zero Trust Architecture: An AI-Driven ASPM Framework Using CICIDS-2017 Network Attack Traffic. *2026 IEEE 5th International Conference on AI in Cybersecurity (ICAIC)*, 1–7. <https://doi.org/10.1109/icaic67076.2026.11395835>

27. Gaddam, S. (2024). Integrating machine learning models with continuous integration and continuous delivery (CI/CD) pipelines for a learning-driven approach to software engineering.
28. Reddy, S. K. R. Developing a Modular AI Framework to Enhance Scalability and Personalization in Next-Generation Reward Platforms.
29. Poojari, R. INTELLIGENT SYSTEMS+B108 AND APPLICATIONS IN ENGINEERING.
30. Santthosh Saai Reddy Purmani. (2026). Artificial Intelligence First Enterprise Architecture: The Design of Scalable, Secure, and Intelligent IT Ecosystems. *American Journal of AI Cyber Computing Management*, 6(1(2)), 1–8. [https://doi.org/10.64751/ajaccm.2026.v6.n1\(2\).pp1-8](https://doi.org/10.64751/ajaccm.2026.v6.n1(2).pp1-8)
31. Viswanathan, V. (2023). AI-Augmented Decision Intelligence for Enterprise Systems: Integrating Cognitive Analytics for Resource and Talent Optimization.
32. Mudusu, S. (2025). Health Insurance Fraud Detection: The Role Of Advanced It Systems In Preventing And Identifying Fraud. *International Journal*, 16(1), 3769-3777
33. Viswanathan, V. Generative AI for Smarter Workforce Planning and Enterprise Resource Decisions.
34. Mudusu, S. K. (2025, December 22). Cognitive data architecture: Designing self-optimizing frameworks for scalable AI systems. CIO (Foundry Expert Contributor Network).
35. Agrawal, A. M., Gajula, S., Shinde, R. P., Shah, H., & Ghosh, H. (2025, July). Machine Translation for Long Sequences with Enhanced Attention Mechanisms. In *2025 5th International Conference on Electrical, Computer and Energy Technologies (ICECET)* (pp. 1-6). IEEE.
36. Maturi, S. Y. (2021). Blockbond hardening: Securing pooled-hash protocols against traffic tampering, MITM hash-rate hijacking, and template coercion. *International Journal of Communication Networks and Information Security*, 13(3), 718–728.
37. Sikder, M. Z., Shakil, M. A. I., Ahad, A., Karim, M. F., Intakhab, B., & Islam, D. A. (2025, June). Microwave-Based Detection of Early-Stage Renal Cell Carcinoma Using UHF Range Antenna. In *2025 International Conference on Computer Systems and Technologies (CompSysTech)* (pp. 1-6). IEEE.
38. Manoharan, D. (2024). Governance-Oriented Quality Engineering Framework for Healthcare EDI Modernization. *International Journal of Multidisciplinary on Science and Management IJMSM*, 1(2).
39. Ravishankara, M. (2026, February). PlotChain: Deterministic Checkpointed Evaluation of Multimodal LLMs on Engineering Plot Reading. In *SoutheastCon 2026* (pp. 1-8). IEEE.
40. Doragacharla, V. R. (2026). Building Real-Time Pricing Systems for Modern Retail. Available at SSRN 6451760.
41. Adabala, P. K. (2024). Utilizing predictive analytics to improve efficiency and decision-making in ERP-connected supply chains. *International Journal of Intelligent Systems and Applications in Engineering*, 12(22s), 2465
42. Venkata Ramana, P. (2024). AI-driven predictive analytics in ERP systems for proactive supply chain optimization. *International Journal of Research in Information Technology and Computing*, 8(4).
43. Kavuri, S. (2026). An Explainable Machine Learning Framework for Predicting Software Defects in Large-Scale Software Systems. *2026 IEEE 5th*

- International Conference on AI in Cybersecurity (ICAIC), 1–6.
<https://doi.org/10.1109/icaic67076.2026.11395777>
44. Srikanth Kavuri. (2025). AI-DRIVEN TEST AUTOMATION FRAMEWORKS: ENHANCING EFFICIENCY AND ACCURACY IN SOFTWARE QUALITY ASSURANCE. *International Journal of Applied Mathematics*, 38(10s), 699–710. <https://doi.org/10.12732/ijam.v38i10s.990>
 45. Venkata Pavan Kumar Gummadi. (2023). MuleSoft Batch Processing: High-Volume Streaming Architecture. *Computer Fraud and Security*, 50–57. <https://doi.org/10.52710/cfs.886>
 46. Venkata Pavan Kumar Gummadi. (2026). Infrastructure Optimization Techniques for Enterprise Integration Platforms: A Comprehensive Analysis. *Computer Fraud and Security*, 37–44. <https://doi.org/10.52710/cfs.875>